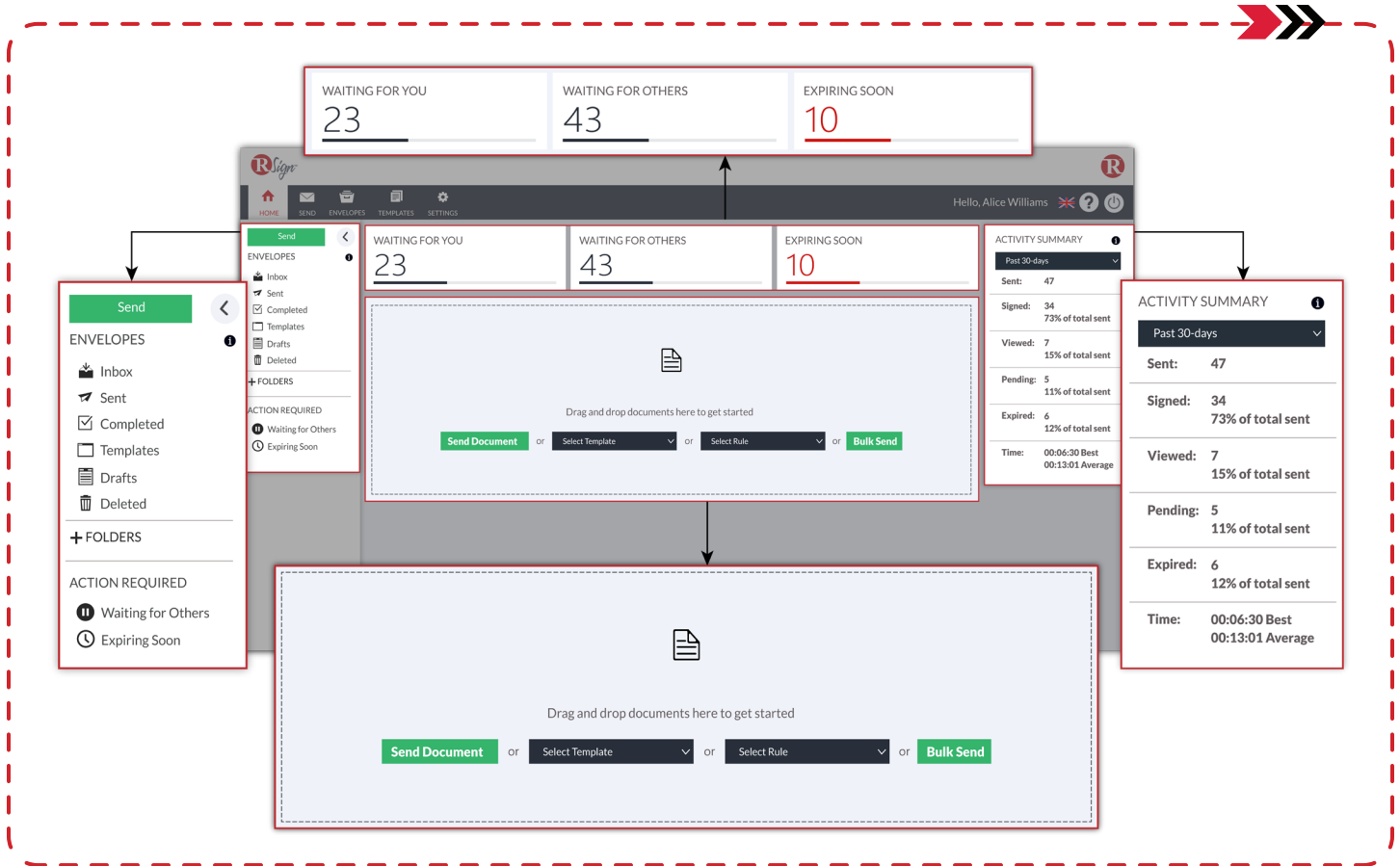


Personalized Home Dashboard



The RSign Home Dashboard is the one-stop-shop for all your eSign activities and information. It offers a quick snapshot of your most relevant activities and metrics within the RSign platform with real-time envelope tracking for complete visibility over your eSign requests, notifications of upcoming signing events, and more.

With just a few clicks, you can send eSign requests by dragging and dropping your documents or selecting from your list of shared templates.